

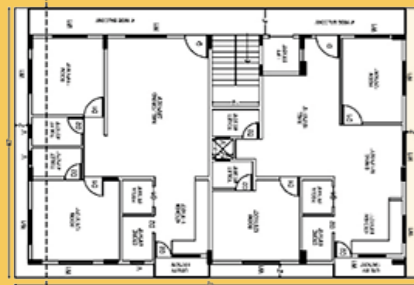
## TYPICAL FLOOR PLAN



## ROUTE MAP



### GROUND & FIRST FLOOR



### THIRD FLOOR



## NEIGHBOURHOOD



MANDYA BUS STOP



AYUR VEDA HOSPITAL



RELIANCE TRENDS



PES COLLEGE



SHOPPING MALL



MEDICAL COLLEGE

## PROJECT DETAILS

MUDA APPROVAL	READY FOR REGISTRATION
TOTAL LAND AREA	40 X 60
TOTAL NO'S OF FLOORS	STILT + GROUND + 3
TOTAL UNITS	8 UNITS (2BHK = 4UNITS AND 3 BHK 4UNITS)
TYPE OF UNITS	2 BHK AND 3 BHK
UNIT SIZES	1000 SFT. & 1200 SFT.
KATHA TYPE	A KATHA PROPERTY
BANK LOANS	SBI AND ALL NATIONALISED BANKS



For more details Contact

**96 1123 1123 / 9902 556677 / 94480 38676**

#45, 36th 'F' Cross Road, Jayanagar 4th Block, Bengaluru- 560 041 www.vistara.life



# SAMRUDDHI

PREMIUM

# FLATS & AFFORDABLE

@ Shankrappa Layout - MANDYA

**2 & 3 BHK**

**Near Mandya Bus Stop**

This Brochure is pure conceptual and not a legal offering



# SAMRUDDHI

**SAMRUDDHI** is a fully loaded project in close proximity to the most happening places in Mandya. It comprises of 2BHK & 3BHK in an enclave. Located at a stone throw distance from BUS STOP & up coming 1.5 kilometer from High Way Road and 1 Kilometer International School and Colleges, easy accessible to Hospitals, Shopping Malls, Temples.

## GET READY FOR SMART LIVING

## LUXURY FLATS WITH 8 UNITS

### AMENITIES & FACILITIES



## SPACIOUS LIVING ROOM



### Isometric View



## SPECIFICATION

### STRUCTURE

RCC framed structure.  
Soild concrete blocks for walls.  
All Internal walls shall be smooth plaster followed by lime render.  
All external walls shall be cement plastered.

### FLOORING & TILING

**Living /dining & Bedrooms :** Vitrified tiles  
**Kitchen :** Vitrified tiles, Glazed tiles above the counter up to a height of 2 feet

**Bathrooms :** Anti skid tiles on the floor and glazed tiles on the walls up to a height of 7 feet

**All common lobby & Stairs :** Vitrified or Polished Granite

**Balconies & Verandah :** Terracotta colour tiles

**Kitchen Counters :** 19mm thick high bull nosed polished Granite

### KITCHEN

Provision for aqua guard point near kitchen sink Hot & Cold water mixer provision for kitchen sink Provision for Dish Washer and washing machine points in utility Provision for geyser & mixer

### SANITARY, PLUMBING & FIXTURES

**Sanitary Fittings :** All sanitary fittings shall be of Cera / Hindware or equivalent.

**Plumbing :** Wall mixers in toilets shall be of Cera / Hind ware equivalent. All water supply lines shall be in CPVC. Drainage lines and storm water drain pipes shall be in CPVC.

### DOORS & WINDOWS

**Door frames :** The main door shall be of Teak and other door frames shall be of salwood/Red meranti wood Door

**Shutters :** Main door shall be in solid core flush shutter provided with a natural wood veneer. The internal doors shall be pre engineered, pre-molded skin doors.

**Window Shutters :** Aluminum/Sliding window with provision for

### ELECTRICAL & COMMUNICATION

**Wires :** PVC insulated fire retardant wires of Anchor/Havells/ Finolex or equivalent make.

**Switches :** Premium electrical switches of Anchor Roma/ Crabtree/Equivalent Premium distribution boards of reputed make.

**Connected Power :** 2KVA for 2BHK, 3KVA for 3BHK,

### ELEVATOR

4 no of Passenger Lift of reputed brand shall be provided.

### GENERATOR

D.G. back up for common areas.